

The Ponderosa

The Pine Ridge Association Newsletter
Henry W. Coe State Park



The Ranch House.
Photo by Sue Dekalb.

Who Lived Here?

By Teddy Goodrich

“Who lived here?” This is one of the most frequently asked questions at park headquarters, and one without an easy answer. The ranch house was built, or more likely cobbled together, from abandoned homestead cabins in 1905, the same year that Henry Coe married Rhoda Sutcliffe. The assumption is that Henry brought his new bride to Pine Ridge to live at the end of a long, winding dirt road in a three-room, single-wall house without running water, telephone, indoor plumbing, or electricity. No!

First of all, the Coe family always referred to the ranch complex at Pine Ridge as the “Pine Ridge Camp.” Pine Ridge was summer range where their cattle grazed during late spring, summer, and early fall before being driven back to their home ranch in the San Felipe Valley east of San Jose. Members of the Coe family may have lived in the ranch house briefly when they were gathering cattle, but most of the time the ranch house was living quarters for their hired help. Sada and her husband, Charles Robinson, lived here for a few years after their marriage in 1932, and ranch hands Callie and Ben Nunes occupied the ranch house from about 1939 to the mid 1940s.



Late Spring 2014

Inside this issue:

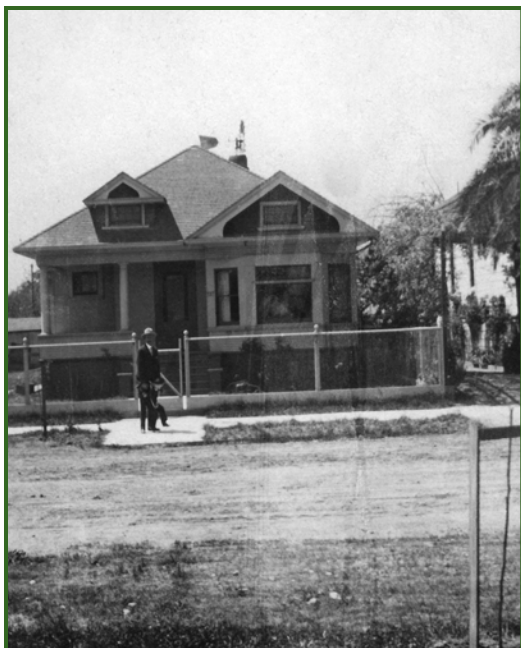
<i>Who Lived Here?</i> by Teddy Goodrich	1,2
<i>Coe Park Fun Events Rain Coats and Rubber Boots</i> by Chere Bargar	3
<i>PRA Annual Meeting</i> by Barbara Bessey	4,5 8,9
<i>Fantastic Fibonacci</i> by Barry Breckling	6
<i>Park Events and Informa- tion</i>	7
<i>News from the Board of the Pine Ridge Association</i> by Ron Erskine	10
<i>Coe Park Fun Events Gilroy Hot Springs and Historic Anza Tour on Horseback</i> by Chere Bargar	11
<i>PRA Financial Report</i> by Cynthia Leeder	12
<i>News from Gilroy Yamoto Hot Springs</i> by Laura Dominguez-Yon	13

Continued on page 2....

Who Lived Here? Continued....

So where did Henry Coe and his family live? After his marriage, Henry purchased a newly constructed home at 737 South Eleventh Street in San Jose so his wife, and eventually their children, could enjoy the amenities that city living provided: water, telephone, electricity, indoor plumbing, easy access to shopping, and nearby schools. Sada, and her older brother, Henry Sutcliffe, grew up in this four bedroom, one bath home. The home still stands, though in the shadow of 280. In the 1930s, the Coes built a large, Spanish style two story home on their San Felipe Ranch and maintained a suite at the St. Claire Hotel in San Jose for trips into the city that required an overnight stay.

The real answer to “who lived here” would certainly shatter a visitor’s image of a cattleman and his family living a rustic lifestyle in the hills.



737 South Eleventh Street, San Jose.
Photo courtesy Peter Verbica.



Home on the San Felipe Ranch.
Photo courtesy of Peter Verbica.

PRA New Members

We are pleased to welcome the new members listed below. Thank you for your support.

We need your help to keep our membership list current and accurate. If you have any questions regarding your membership or to let us know of any change of address, please contact us. If you have chosen to receive *The Ponderosa* electronically and, for some reason, it is undeliverable, we will send the next issue via USPS.

Thomas Reynolds, Los Altos
John Rinaldo, Morgan Hill
Lori Van Houten, Redwood City

Email: membership@coepark.net
US mail: 9100 East Dunne Avenue, Morgan Hill, CA 95037
Phone: 408-779-2728

Coe Park Fun Events

By Chere Bargar

Rain Coats and Rubber Boots

The weather was gorgeous so there were plenty of rubber boots, but only one little boy wore his raincoat. Kids plus water always equals a good time. They had boats to pull through the creek, made bracelets from beads as they learned about aquatic life, and discovered some facts about animals and plants on the scavenger hunt.

Children and parents were fascinated and curious about a water snake that made an appearance.

A great addition this year was the mountain biking challenge course for kids. Volunteer Paul Liebenberg created an obstacle course deluxe. Kids weren't the only ones who had a blast as they learned to navigate the course under the watchful eyes of Coe's mountain bike volunteers, parents borrowed their kid's bikes too. A number of mountain bikers heading out on the trail took a detour and rode the course on their way out and on their way back to the parking lot. Loaner bikes and helmets were available so everyone could participate.

All in all, just short of a hundred people had a very enjoyable day.



Leonardo SanMiguel



Ryan Strenfel riding the bumps!



Liam Lomas having a blast!



Dylan and Morgan Rush, enjoying a splash!

Photos by Dan Benefiel.
More photos on page 10 and 11

PRA Annual Meeting

By Barbara Bessey

The annual meeting of the Pine Ridge Association was held in Morgan Hill on February 1st, 2014.

Board of the Pine Ridge Association Meeting

PRA board vice president Ron Erskine opened the meeting, introduced the members of the board of directors, and reported on the results of the election of officers. The officers and members of the board for 2014 are:

Diana Goodwin, president
 Ron Erskine, vice president
 Steve McHenry, secretary
 Cynthia Leeder, treasurer
 Dan Benefiel
 Ken Howell
 Paul Liebenberg
 Peter Coe Verbica (appointed to fill a board vacancy)
 Jim Wright (chair of the uniformed volunteer committee)

- Ron said that summaries of board meetings would be included once again in The Ponderosa. He also mentioned that the board was interested in receiving comments and suggestions from association members. He then said that the board was concerned about the association's finances because receipts from membership dues were lower last year than the previous year, and in 2013 the association provided grants to fund infrastructure projects and paid higher insurance premiums.
- Cynthia distributed a preliminary treasurer's report for 2013. She indicated that there will be a financial review this spring. She said the total income for the year was \$104,181, and the total expenses were \$103,783. Going forward, the association's challenge will be to raise more funds through interpretive programs, visitor center sales, and donations, while finding ways to operate more efficiently.

Volunteer Committee Meeting

The meeting of the PRA uniformed volunteers followed, chaired by Jim Wright. The other members of the volunteer committee were introduced: Liz Brinkman, Ken Howell, Manny Pitta, and John Thatcher.

There were fourteen new volunteers in the Fall training class. The total number of uniformed volunteers is now 132 people who volunteered 15,722 hours during the year.

Twelve people who served 50 or more hours beyond the training program advanced to full volunteer status:

Eva Bialkowski	Dan Healy
David Cartwright	Michael Hunt
Olga Eames	Bob Kass
Chris Fent	Jill Newburn
Paul Gillot	Buddy Schwabe
Pete Harper	Lourdes Stone

Four people who had volunteered 250 or more hours, of which at least 100 hours were spent in the visitor center, were promoted to senior volunteer status:

David Cartwright
 Sue Dekalb
 Debbie Frederick
 Lynne Starr

PRA Annual Meeting, continued....

Thirty-seven volunteers received the visitor service award, a special super bright LED flashlight bearing the PRA logo. These volunteers spent 48 or more hours working in the visitor center or on other visitor-related activities during the past year, for example, presenting programs to visitors or leading hikes and participating in interpretive events:

Chere Bargar	Michael Hundt	Pat Scharfe
Jim Brady	Jodie Keahey	Martie Sinclair
Ann Briggs	Linda Keahey	Rob Sinclair
Winslow Briggs	Gary Keller	Lynn Starr
David Cartwright	Cynthia Leeder	Dave Stoner
Sue DeKalb	Rick Leonard	Carolyn Straub
Darryl DuBois	Jim Mason	Kitty Swindle
Bill Frazer	Margaret Mary McBride	Nancy Valencia
Debbie Frederick	Steve McHenry	Bev VanderWeide
Paul Gillot	Dave Perrin	Libby Vincent
Patrick Goodrich	Lois Phillips	Bill Workman
Teddy Goodrich	Manny Pitta	Dean Yon
Don Holmes		

Fifteen volunteers received special recognition for all the hours they have spent on Coe Park volunteer activities over the years. Between them, they have donated 48,409 hours to the park! Dan Benefiel, Dave Flack, Alan Haviland, Cynthia Leeder, Paul Liebenberg, Steve McHenry, Dave Stoner, and Jim Wright volunteered at least 1,000 hours of service. Heather Ambler, Sue DeKalb, and Ken Howell volunteered at least 2,000 hours of service. Chere Bargar volunteered at least 7,000 hours of service. Kitty Swindle volunteered at least 8,000 hours of service. Ann Briggs and Winslow Briggs each volunteered more than 9,000 hours of service.

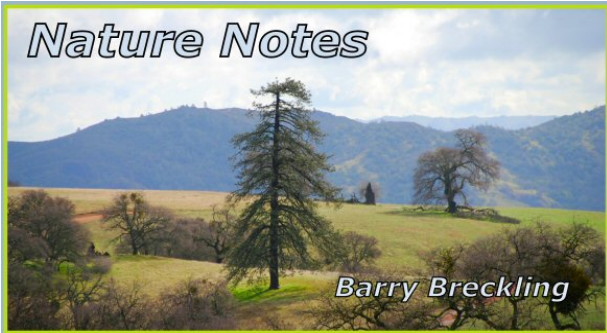
A special silver pin with the PRA logo was presented to six people who have participated in the uniformed volunteer program for ten years or more: Colleen Combes, Darryl Dubois, Ken Howell, Rick Leonard, Diane Scarriot, and Jim Wright. A special gold pin with the PRA logo was presented to two people who have participated in the uniformed volunteer program for twenty or more years: Joseph Belli and Bonnie Doran. And Janet Koff received a special pin to honor her more than thirty years as a uniformed volunteer.

Ranger John Verhoeven presented annual passes to California State Parks to 40 volunteers who had donated 200 hours or more within the past year and to couples whose combined number of hours totaled 200 hours or more. The hours include the time spent by some uniformed volunteers who volunteered time at other state parks, and the time that some non-uniformed individuals volunteered at Coe Park:

Chere Bargar	Ken Howell	Martie Sinclair
Jim Brady	Ken Hulick	Rob Sinclair
Ann Briggs	Jodie Keahey	Lynne Starr
Winslow Briggs	Linda Keahey	Dave Stoner
David Cartwright	Cynthia Leeder	Carolyn Straub
Sue DeKalb	Rick Leonard	Jim Swartz
Ruby Domino	Paul Liebenberg	Kitty Swindle
Laura Dominguez-Yon	Steve McHenry	Ted Tawshunsky
Bill Frazer	Bob Patrie	John Thatcher
Paul Gillot	Manny Pitta	Bev VanderWeide
Patrick Goodrich	Dick Rawson	Libby Vincent
Teddy Goodrich	Roy Ross	Jim Wright
Dan Healy	J.J. Sasaki	Dean Yon
Don Holmes		

Continued on page 8....

Nature Notes



come up with the next number in the series, in this case 8. So what does mathematics have to do with nature? A lot!

The number of flower parts is often a Fibonacci number. It's common to find flowers with 3, 5, and 8 petals. Sunflower family plant parts often come in Fibonacci numbers. Take Brewer's Butterweed, *Packera brewerii* (previously *Scenico breweri*) for example (which grows near Frog Lake). The bracts at the base of the flower head, called phyllaries, number 13 or 21 and the petal-like ray flowers most commonly number 8. The disk flowers, the small flowers in the middle that develop into fruits of this and many other plants in the Sunflower family, are arranged in two sets of spirals, one set spiraling clockwise and the other counterclockwise. If you count the number of left-curving spirals and the number of right-curving spirals, you'll have adjacent Fibonacci numbers. The same is true for the scales of pine cones and the segments on pineapples. These spirals allow for the most efficient arrangement of flowers and later fruits in a pattern that facilitates growth.

The leaves of many plants spiral up the stem in Fibonacci fashion. One pattern involves the numbers 2 and 5. If you follow the leaves up the stem in a spiral manner, it will take you 2 spirals and 5 leaves to get to a leaf that is above the first leaf. This is the most efficient arrangement of leaves for gathering light, ensuring the least amount of shading by upper leaves.

The Fibonacci Sequence brings some order to our understanding of our complicated natural world, but a deeper look can reveal that things aren't always so simple. Yet, that deeper look will also reveal more patterns. For example, there are the Golden Ratio, the Golden Angle (137.5°), and the Golden Rectangle, which are Fibonacci-related mathematical concepts used in artwork by Leonardo Da Vinci, in architecture like the Parthenon and the Egyptian pyramids, in bee colony ancestry, in the pattern of cactus spines, in the shape of your ear, in the spiral shape of a nautilus shell, and even in places that are outside of this world, such as the shape of our Milky Way galaxy.

Fantastic Fibonacci

No, Leonard Fibonacci was not a member of a high-wire act. He was a brilliant Italian mathematician of the Middle Ages. In 1202 he published *Liber Abaci* (Book of Calculation), which helped spread the use of the modern Arabic numeral system (no more VII, XVII, etc.). In the book he also talked about a sequence of numbers that would later bear his name, the Fibonacci Sequence. The sequence is 0, 1, 1, 2, 3, 5, 8, 13, 21, 34, and so on. Basically, the series takes two adjacent numbers, say 3 and 5, and adds them to

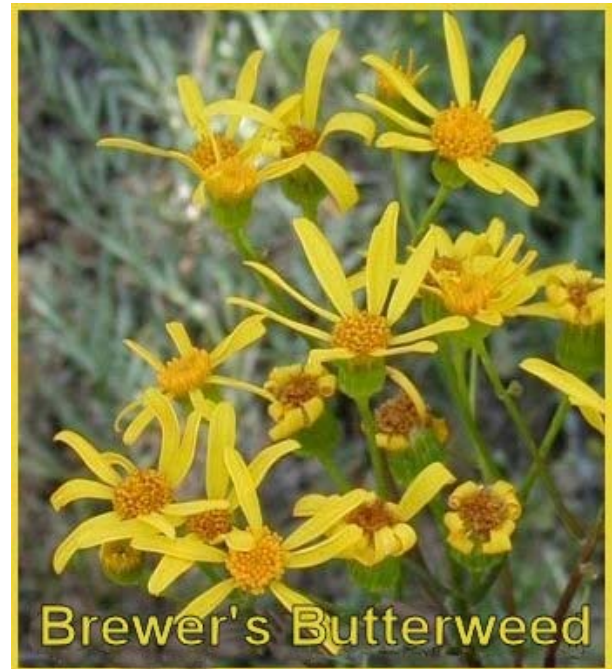


Photo by Barry Breckling.



Park Events and Information

Mark your calendars—important dates and other announcements

Also visit www.coepark.org for more information about all activities.

Annual park events coming up

Friday April 25 through Sunday April 27 is the *Coe Backcountry Weekend*. Once again, this year's event will be starting earlier, allowing backpackers and campers entry at 1.00pm on the Friday. There may still be space available so please visit www.coepark.org for more information.

Sunday May 11, Mother's Day Breakfast. Once again this event will take place at Ridgeview campsite. The event sells out very quickly, so get your tickets early from the following link.

<https://www.eventbrite.com/e/henry-w-coe-state-park-mothers-day-breakfast-2014-tickets-10758660443>

For more information visit www.coepark.org or call the visitor center at 408-779-2728.

Saturday, May 17, Ranch Day. 10:00am-3:00pm at Hunting Hollow. (Rain date June 7). For more information, please call Chere at 408-683-2247 or Kitty at 408-842-6215 or visit www.coepark.org.

Saturday June 7, Hunting Hollow 5K/10K walk and fun run. You can register for this fun event at www.coepark.org and download an entry form. For more information email kfhowell@pacbell.net.

The Dowdy Visitor Center

The Dowdy Entrance is now open. From Saturday April 5, it will be open Fridays, Saturdays and Sundays. See www.coepark.org for more details. However, please note: It will be **closed** for the Coe Backcountry Weekend, April 25, 26, and 27.



The Rooster Comb.
Photo by Ron Erskine.

"Seeking Solitude and Serenity in the Orestimba" by Ron Erskine

Check out the latest issue of Bay Nature! Long-time Coe Park volunteer Ron Erskine has written a fine article on the Orestimba Wilderness and it's been published in the April-June 2014 issue, together with some fine photos. The article is at:

<http://baynature.org/articles/nearby-wilderness/>

You can read the article online or, even better, subscribe to Bay Nature.

PRA Annual Meeting, continued....

Ranger John Verhoeven presented free annual passes to State Parks in the Monterey District to 46 volunteers (uniformed and non-uniformed) who had donated at least 72 hours but fewer than 200 hours (and to families whose combined number of hours totaled between 72 and 200 hours):

Heather Ambler
 Dan Benefiel
 Jesse Benefiel
 Ewa Bialkowski
 Liz Brinkman
 Dale Combs
 Tom Conrad
 Darryl DuBois
 Olga Eames
 Ron Fischler
 David Godkin
 Rob Glover
 Pete Harper
 Sue Harwager
 Michael Hundt
 Jan Jeffers

Ralph Johnson
 Chris Kangas
 Bob Kass
 Gary Keller
 Irwin Koff
 Janet Koff
 Jim Mason
 Margaret Mary McBride
 Mike Meyer
 Gary Newsome
 Lori Oleson
 Sam Parker
 David Perrin
 Lois Phillips
 Karen Pogue

John Prior
 Bruce Rideout
 Rosemary Rideout
 Diane Scariot
 Pat Scharfe
 Buddy Schwabe
 Greg Scott
 Heike Stabenow
 Rainer Stabenow
 Susan Stillman
 Dick Stone
 Lourdes Stone
 Dave Waldrop
 Chris Weske
 Bill Workman

Golden Bear Award

The volunteer committee's Golden Bear Award for exceptional service was given to Dave Stoner. Dave joined the volunteer program in 2010. He volunteered 316 hours this past year, bringing the total number of hours he has volunteered to more than 1,000. He is a member of the trails and springs committee and he monitors water resources throughout the park, checking on water levels and availability in the springs, creeks, lakes, and ponds and updating the information on the park website within 24 hours of each visit. Last year, he spent 213 hours auditing Coe's water resources, and he drove almost 1,500 miles within the park carrying out this work. Dave also partnered with Libby Vincent to initiate and prototype a new program, visitor support stations, that staff important trail junctions in the park and make information and water available to visitors in the backcountry.

Dave Stoner receiving the Golden Bear Award from Ranger John Verhoeven.



Photo by Dick Rawson.

Continued on page 9....

PRA Annual Meeting, continued....

Volunteer of the Year Award

The PRA volunteer of the year award is given to volunteers who have contributed outstanding work in furthering the mission of the association in preserving and enriching Coe Park. This year's award was given to Cynthia Leeder. Cynthia joined the uniformed volunteer program in 2010. She volunteered 500 hours this past year, bringing the total number of hours volunteered to more than 1,300. And, in 2013, she spent over 400 hours working in the visitor center. Cynthia has served on the volunteer committee and on the PRA board of directors. She is now treasurer of the PRA. In her spare time, Cynthia loves taking photos. Her photos have won awards and appeared on T-shirts produced for the Coe Backcountry Weekend as well as the photo that was printed on the coffee mugs that were awarded to volunteers receiving the visitor service award last year.



A delicious hot lunch was provided at the end of the meeting and volunteers and park friends gathered to feast and catch up with each other. Many thanks to the volunteers who worked hard in the kitchen preparing everything.

Congratulations to everyone!

Cynthia Leeder receiving the Volunteer of the Year Award from John Verhoeven.

Photo by Dick Rawson.

Congratulations to the Class of 2014 Volunteers



Top Row (left to right): John Verhoeven; Eric Simonsen; John Rinaldo; George Cooper; Mark Deger; Martin Cheek; Joe Fabiny; Bill Schloetter; Rebecca Faith; Manny Pitta, training coordinator.

Bottom Row: Roy Ross; Dean Yon; Allene Liebenberg; Bonnie Daley; Ligaya Yrastorza.

Not pictured: Martin Eppel

Photo by Dick Rawson.

News from the Board of the Pine Ridge Association

By Ron Erskine

The Pine Ridge Association board of directors met on Tuesday March 11, 2014 in the meeting room at the Gilroy Public Library.

Ann and Winslow Briggs and Libby Vincent attended to present to the board a conceptual proposal that originated in Sacramento at the Parks Forward Commission. The plan is to have backcountry shelters (cabins, tent cabins, or yurts) set up at three locations in the park that are within hiking distance of each other. The shelters would be on skids (i.e., nonpermanent and movable) and would provide dormitory accommodation, cots with pads, cooking utensils and propane stove, and perhaps fire pit and supply of wood. A concessionaire would run the business and maintain the shelters. There would be no state or PRA financial involvement. There is interest in the idea at the sector and district levels. All details are yet to be determined should this go forward. The Briggs and Libby were simply seeking board approval for the concept, which the board unanimously gave.

Treasurer Cynthia Leeder reported an income to date of \$9,697, expenses of \$9,074, for a net income of \$623. The balance sheet has various long-held stocks that were donated to the PRA as well as other investments. The board created a finance committee to consider prudent alternative ways to invest those proceeds without the downside exposure they now have.

Questions about the extent of our current insurance coverage were raised and members are have been tasked to find answers. Also, an alternative insurance market that specializes in nonprofits was discussed and will be contacted.

Membership and donor data lists will be organized by Ken Howell and Manny Pitta to be used as a basis for a future discussion about a possible fund raising campaign.

The next PRA board meeting will be held at 6:30 pm, Tuesday May 13 at the Gilroy Library meeting room. All PRA members are invited to attend.

More fun from Rain Coats and Rubber boots



From left Ryan Strenfel, Luke Lomas, Caroline,
Liam Lomas.
Photo by Dan Benefiel.



The MacCrae Family.
Photo by Tom MacCrae.

Coe Park Fun Events continued....

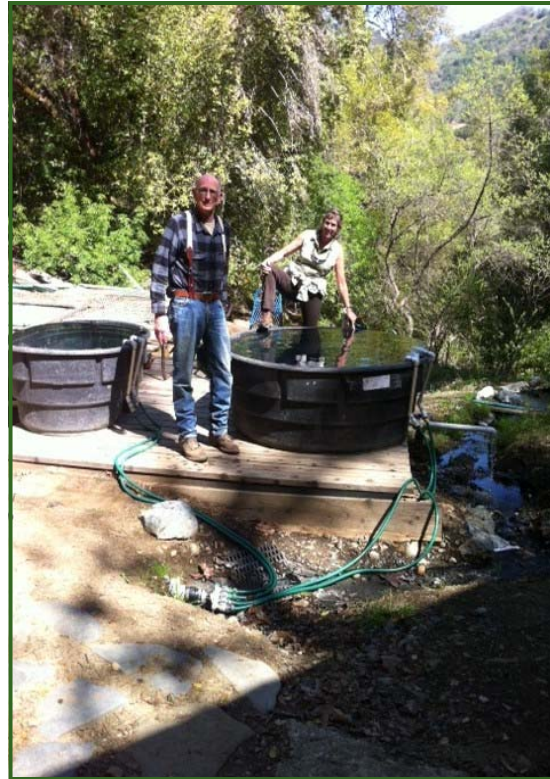
Gilroy Hot Springs and Historic Anza Tour on Horseback

Spring like weather greeted the sixteen visitors and volunteers as they enjoyed a leisurely ride on a portion of the Anza Trail and then through Gilroy Hot Springs. The Anza Trail follows the expedition's 1200 mile route from what was then Mexico (now Arizona) to establish a mission and colony in the San Francisco Bay Area.

Visitors dipped their fingers in the warm waters of the hot springs, got to see some of the restoration being done first hand, and learned about the history of the area.



Along the Anza Trail.
Photo by Susan Stillman.



Dipping fingers into the warm waters of
the hot springs.
Photo by Susan Stillman.



There gives the history of
the bathhouse, generator,
cistern, and other buildings
to the riders.
Photo by Sue Dekalb.

PRA Financial Report

By Cynthia Leeder

Taking over as treasurer has certainly been a learning experience and I am still learning the ropes. But after my first few months as treasurer, I have to say Dan McCranie was an absolute saint for doing this job for so long! It can be demanding and time-consuming and he did it with amazing dedication and grace. As an organization, I don't think we can ever thank him enough for his long years of service. I hope I can fill his shoes as I take over and be as effective.

Otherwise, as I have worked with the numbers from 2013, I have some updates from the numbers I provided at the annual meeting. To summarize, the balance sheet as of 12/31/2013:

Balance Sheet

Total bank accounts	\$87,702
Total inventory assets	\$80,761
Total fixed assets	\$193
Total marketable securities	\$132,685
Total accounts receivable from sale of stock	\$11,853

Total Assets..... \$313,194

2013 Profit and Loss

Total contributions	\$41,302
Total investment gain/loss	\$927
Total visitor center sales	\$22,863
Total program revenue	\$40,881

Total Income \$105,973

Total cost of goods sold	\$11,739
--------------------------------	----------

Gross Profit \$94,234

Expenses

Total business and operations expense	\$42,976
Total interpretive program expenses ...	\$25,716
Total visitor center expenses	\$3,603
Total contributions and grants	\$33,000

Total Expenses..... \$105,295

Net Income..... -\$11,061

As we move into 2014 I am still waiting to collect the visitor center sales data for the end of the first quarter. The major PRA events have yet to happen and so at this point it's not clear where we stand. Nonetheless, I am looking forward to a successful year.



News from Gilroy Yamato Hot Springs

by Laura Domínguez-Yon

Was there ever a piece of information you learned, repeated frequently as a statement of fact, but hadn't thought much about? The information about 40 cabins at Gilroy Yamato Hot Springs (GYHS) named after states was one of those for me. It wasn't until the third graders three years running asked, "Why? Why were the cabins named after states?" that I began to ponder. I knew California joined the Union 15 years before GYHS was established. Plus I found an article about our hot springs in an 1866 newspaper, right beside an article about Abraham Lincoln's memorial service the previous year. Imagine, GYHS established the same year Lincoln was assassinated. And now, thanks to a Washington Post blog, we can "see" the states joining the Union in one minute. I realize this wouldn't have interested me until the third graders asked the question, "Why?" My answer now: "Statehood was a big deal back then!"

See the original articles: [1866 Daily Alta California](http://bit.ly/1hHYIPO), (<http://bit.ly/1hHYIPO>) and [Washington Post blog](http://wapo.st/1lI7eSX) (<http://wapo.st/1lI7eSX>)



I still don't have an answer to the third graders' question "What games did you play back then?" Do any of you Ponderosa readers have an answer?

Tell all your friends about our twice-monthly guided tours of GYHS! Docent Karen Pogue leads the second Saturday tours and Mark Deger leads the fourth Saturday tours, both from 10:00 a.m. to noon. Providing backup support is Dean Yon, and it seems that I've become a featured highlight of the tour. The tricky part is to stop me from talking, otherwise you'll have the theme song from "Gilligan's Island" running through your mind, "a three-hour tour..."

Save the date: Saturday, May 24th is the sixth annual GYHS public event—tours all day, exhibitors, entertainment; bring your picnic, friends, and chairs! This event highlights healthy living—alternative healing, martial arts, nutrition, and more! GYHS was "a place of healing." Bring your family and friends! Make a short visit or stay all day! Volunteers welcome: parking logistics, food for volunteers, uniformed volunteers at the gate, entertainment, docent guides, communications and safety, exhibitors, exhibitors, setup/teardown crew. Email: info@GilroyYamatoHotSprings.org or call: 408-314-7185.



Nonprofit Org.
U.S. Postage Paid
Morgan Hill, CA
Permit No. 160

Pine Ridge Association
Henry W. Coe State Park
9100 East Dunne Avenue
Morgan Hill, CA 95037

408-779-2728
www.coepark.org

PRA Board of Directors

Diana Goodwin, President
Ron Erskine, Vice President
Steve McHenry, Secretary
Dan Benefiel
Ken Howell
Paul Liebenberg
Peter Verbica
Stuart Organo, Supervising Ranger
Cynthia Leeder, Treasurer

PRA Volunteer Committee

Jim Wright, Chair
Liz Brinkman
Ken Howell
Cynthia Leeder
Manny Pitta
John Thatcher
John Verhoeven, Ranger

Contributors for this issue

Heather Ambler, publisher
Libby Vincent, editor
Chere Bargar, author
Dan Benefiel, photographer
Barbara Bessey, author
Barry Breckling, author, photographer
Sue Dekalb, photographer
Laura Dominguez-Yon, author
Ron Erskine, author, photographer
Teddy Goodrich, author
Cynthia Leeder, author
Dick Rawson, photographer
Susan Stillman, photographer
Peter Verbica, courtesy photographs

Mailing & Distribution

Jodie Keahey
Linda Keahey
Diane Scariot
Pat Sharfe
Martie Sinclair
Carolyn Straub
John Thatcher
Heather Ambler, e-distribution

The Ponderosa is a quarterly publication of the Pine Ridge Association. The PRA's mission is to enhance and enrich the public's experience at Henry W. Coe State Park through education and interpretation. Articles and artwork relating to the natural history, history, and management of the park are welcome. Also, interested in volunteering? Email Jim Wright, jimtina@yahoo.com.

Please send submissions and ideas to the editor at: PRAnewsletter@wildblue.net.

Deadline for the next issue: July 31, 2014

© 2014 The Pine Ridge Association